

RETRW461 ARDMORE - WATERPROOF SHELL JACKET

REGATTA
PROFESSIONAL

HYDRAFORT 5000



POPIS

200 g/m²

Fabric Information

Waterproof Hydrafort 5000 coated peached polyester

Polyester mesh lined

Windproof fabric

Taped seams

Special Features

Concealed hood with adjuster

2 lower zipped pockets

1 internal pocket with earphone cord access

Adjustable cuffs

Adjustable shockcord hem

Internal zipped embroidery access

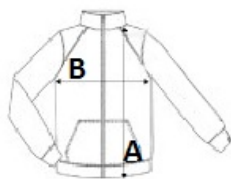
Země původu:

China



ROZMĚRY (CM)

	S	M	L	XL	2XL	3XL
Ks./📦	16	16	16	16	16	16
Délka (A)	76.50	76.50	79	79	81.50	81.50
Šířka přes prsa (B)	53.50	57.50	61.50	65.50	70.50	74.50
Délka rukávu (měřená od středu zad) (C)	67	68	69	70	71	72



BARVY:

Black/Classic Red
 Bottle Green/Seal Grey
 Majestic Purple/Seal Grey
 Navy
 Navy/Classic Red
 Seal Grey/Black