

AWJH008 HEATHER HOODIE Outlet



MAIN FEATURES

- 225 g/m<sup>2</sup>
- 52% Ringspun cotton, 48% Polyester
- Lightweight hoodie
- Slim fit
- Soft feel lightweight fabric
- Twin needle stitching detailing
- Double fabric hood
- Contrast white flat drawcords
- Kangaroo pouch pocket
- Ribbed cuff and hem
- Worldwide Responsible Accredited Production (WRAP) certified production
- Simple tear out label makes it perfect for rebranding

Suggested Decoration:

DTG, Embroidery, Heat transfer, Screen printing

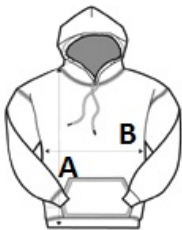
Country Of Origin:

Pakistan



SIZE SPECIFICATION (CM)

	S	M	L	XL	2XL
Pcs./📦	24	24	24	24	24
Body Length (A)	67	69	73	76	79
Chest Width (B)	51	52	58	62	66
Sleeve Length (C)	65.50	65.50	67	68.50	70



COLORS:

■ Black Heather