

JC054 GIRLIE CROSS BACK HOODIE Outlet



JustCool
RWD

MAIN FEATURES

- 240 g/m²
- 60% Polyester 35% Cotton 5% Elastane
- Ultimate 4-way stretch for ease of movement
- Unique cross back styling
- Attached two panel hood
- Crooped length
- Flattering dropped curved hem at front
- Simple tearout label, perfect for rebranding
- Wicking quick dry fabric
- Self fabric cuffs and hem
- Flat lock stitching
- UPF 40+ UV protection

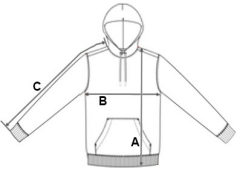
Suggested Decoration:
Heat transfer, Screen printing

Country Of Origin:
China



SIZE SPECIFICATION (CM)

	XS	S	M	L	XL
Pcs./	30	30	30	30	30
Body Length (A)	49	51	53	55	57
Chest Width (B)	51	54	57	60	63
Sleeve Length (C)	65	67	69	71	73



COLORS:

- Arctic White
- Jet Black
- Sports Grey