

KA4010 MEN'S FLEECE CADET JACKET

KARIBAN

MAIN FEATURES

300 g/m²
 80% cotton/20% polyester
 LSF (Low Shrinkage Fleece: pre-shrunk fleece) treatment
 3-yarn brushed fleece in combed cotton
 Slim fit
 Straight sleeves
 High neck
 Matching plastic zip fastening
 2 zipped and piped side pockets
 Half-moon finish at the neckline to facilitate decoration access inside the neckline
 1x1 ribbed cuffs and hem
 Tear-away brand label
 Certified STANDARD 100 by OEKO-TEX® N° CQ1007/7, IFTH

Country Of Origin:

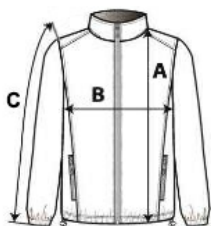
Bangladesh

2025: p. 218



SIZE SPECIFICATION (CM)

| | S | M | L | XL | 2XL | 3XL | 4XL |
|-------------------|-------|-------|-------|-------|-------|-------|-------|
| Pcs./ | 20 | 20 | 20 | 20 | 20 | 20 | 20 |
| Body Length (A) | 70 | 72 | 74 | 76 | 78 | 80 | 82 |
| Chest Width (B) | 52 | 55 | 58 | 61 | 64 | 67 | 70 |
| Sleeve Length (C) | 66.75 | 66.75 | 67.75 | 68.75 | 69.75 | 70.75 | 71.75 |



COLORS:

Black
 Oxford Grey