

LWL9133 LADIES' V-NECK FINE GAUGE COTTON PULLOVER **Outlet**

LEGEND
WORLD WIDE

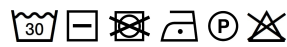
MAIN FEATURES290 g/m²

From September 2025, it will be available under the Legend Classics brand name with a new product code: LE951

100% cotton V-neck sweater
Soft 12-gauge yarn
Rib neck, sleeves, and bottom hem
Washer safe
Oeko-Tex certified

Country Of Origin:

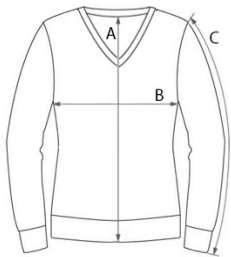
China



2024: p. 325

**SIZE SPECIFICATION (CM)**

	S	M	L	XL	2XL	3XL
Pcs./📦	24	24	24	24	24	24
Body Length (A)	60	61	62	63	64	65
Chest Width (B)	44	47	50	53	56	59
Sleeve Length (C)	60.50	61.50	62.50	63.50	64.50	65.50

**COLORS:**

Black
 Dark Melange Grey
 Light Melange Grey
 Navy