

PR605 'DAISY' HEALTHCARE TUNIC **Outlet**



MAIN FEATURES

195 g/m²

Fabric

65% Polyester, 35% Cotton Twill

195gsm

Features

V-Neck with contrast trims

Covered front zip fastening

Covered popper fastening above zip

Side and back pleats for fitted styling

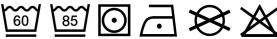
Curved side pockets with contrast piped edge

Suggested Decoration:

Embroidery, Heat transfer, Screen printing

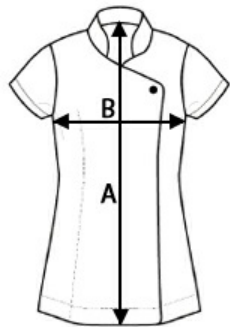
Country Of Origin:

Bangladesh



SIZE SPECIFICATION (CM)

	XS	S	M	L	XL	2XL	3XL	4XL	5XL
Pcs./📦	24	24	24	24	24	24	24	24	24
Body Length (A)	78	78.50	79	79.50	80	80.50	81	81.50	82
Chest Width (B)	45.50	48	50.50	53	55.50	58.50	61.50	64.50	67.50



COLORS:

 Lilac/White