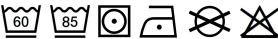



PR671 WOMEN'S LONG SLEEVE CHEF'S JACKET




MAIN FEATURES

- 195 g/m<sup>2</sup>
- Fabric**  
65% Polyester, 35% Cotton Twill  
195gsm
- Features**  
Ten buttonhole wrap over fastening  
Pen pocket on the left sleeve  
Panelled back for a more fitted style  
Mandarin collar  
Easy care
- Suggested Decoration:**  
Embroidery, Heat transfer, Screen printing
- Country Of Origin:**  
Bangladesh



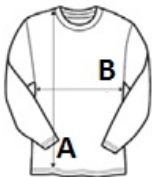
 2025: **p. 149**

 2024: **p. 361**



SIZE SPECIFICATION (CM)

	XS	S	M	L	XL	2XL
Pcs./📦	24	24	24	24	24	24
Body Length (A)	76	76	76	76	76	76
Chest Width (B)	47	49.50	52	54.50	57	60



COLORS:

☐ White