

**PR682 'ORCHID' BEAUTY AND SPA TUNIC****MAIN FEATURES**185 g/m<sup>2</sup>**Fabric**

100% Polyester plain weave 185gsm

**Features**

Beauty and Spa tunic with Mandarin collar

Asymmetric button fastening to the front with eight 'bar' shaped buttons

Side vents

Back pleat for ease of movement

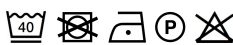
Princess seams

**Suggested Decoration:**

Embroidery, Heat transfer, Screen printing

**Country Of Origin:**

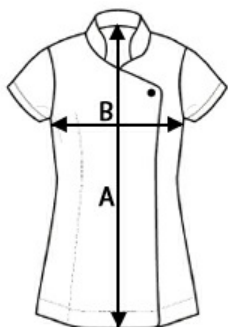
China



2025: p. 154

**SIZE SPECIFICATION (CM)**

	XXS	XS	S	M	L	XL	2XL	3XL	4XL	5XL
<b>Pcs./</b>	12	12	12	12	12	12	12	12	12	12
<b>Body Length (A)</b>	70	71	72	72	73	74	75	76	77	78
<b>Chest Width (B)</b>	44,5	47	49,5	52	54,5	57	60	63	66	68

**COLORS:**

Aubergine	Lime	Sapphire	Silver	Hot Pink	Turquoise
White					