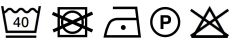


PR683 'BLOSSOM' BEAUTY AND SPA TUNIC



MAIN FEATURES

- 185 g/m²
- Fabric**
 - 100% Polyester plain weave
 - 185gsm
- Features**
 - Beauty and Spa tunic with feature button front fastening with concealed zip
 - Mandarin collar
 - Short sleeve
 - Princess seams
 - Side vents
 - Back pleat for ease of movement
 - Easycare
- Country Of Origin:**
 - China

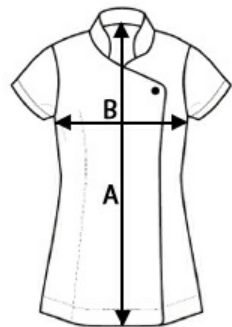


2025: p. 154



SIZE SPECIFICATION (CM)

	XS	S	M	L	XL	2XL
Pcs./👤	12	12	12	12	12	12
Body Length (A)	71	72	72	73	74	75
Chest Width (B)	47	49.50	52	54.50	57	60



COLORS:

☐ White