

RETRA150 CLASSIC 3-IN-1 WATERPROOF JACKET



HYDRAFORT 5000

SYMMETRY

MAIN FEATURES

195 g/m²**Fabric Information**

Waterproof Hydrafort 5000 peached polyester fabric

Polyester taffeta lining

Windproof fabric

Critical seam taping

220 series anti-pill Symmetry fleece

Special Features

Concealed hood with adjusters

Adjustable cuffs

2 zipped lower pockets

Hook and loop fastening at hem for embroidery access

Interactive

2 lower pockets

Made using recycled materials

Suggested Decoration:

Heat transfer, Screen printing

Country Of Origin:

China



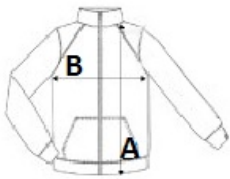
2025: p. 354

2024: p. 609



SIZE SPECIFICATION (CM)

	S	M	L	XL	2XL	3XL
Pcs./📦	8	8	8	8	8	8
Body Length (A)	76.50	76.50	79	79	81.50	81.50
Chest Width (B)	54	58	62	66	71	75
Sleeve Length (C)	67	68	69	70	71	72



COLORS:

Seal Grey
 Black/Black
 Classic Red/Black
 Navy/Navy