

RETRA590 ESSENTIAL HYBRID JACKET **New**
**REGATTA**  
 PROFESSIONAL

 CHOOSE YOUR  
**puller**  
 COLOUR

WARM LOFT

EXTOL STRETCH

WATER REPELLENT

### MAIN FEATURES

84 g/m<sup>2</sup>
**Fabric Information**

Lightweight 20d polyamide fabric

Extol stretch sleeves and side panels for fit and freedom of movement

Durable water repellent finish

Warmloft down-touch lightweight insulation - 120gsm

2 zipped lower pockets

Stretch binding to collar, cuffs and hem

Supplied with 4 alternative colour zip pullers

Ideal for decoration

Made using recycled materials

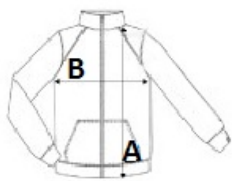
**Country Of Origin:**

Bangladesh



### SIZE SPECIFICATION (CM)

	XS	S	M	L	XL	2XL	3XL
Pcs./📦	12	12	12	12	12	12	12
Body Length (A)	0	71	71	73,5	73,5	76	76
Chest Width (B)	0	51	54	57	61	66	70


**COLORS:**

Black

Navy