

RETRA613 WOMEN'S ABLAZE 3 LAYER PRINTABLE SOFTSHELL JACKET



REGATTA  
PROFESSIONAL

SOFTSHELL XPT

WATERREPELLENT

MAIN FEATURES

300 g/m<sup>2</sup>

Fabric Information

Warm backed woven Softshell XPT waterproof and breathable 3 layer membrane fabric

Wind resistant membrane fabric

Atl durable water repellent finish

Special Features

2 zipped lower pockets

Zippered chest pocket

Adjustable cuffs

Ideal for screen, transfer and vinyl printing

Suggested Decoration:

Digital printing (DTF), Embroidery, Flex, Screen printing

Country Of Origin:

China

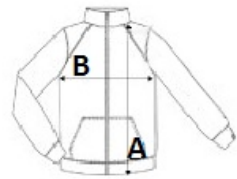


2024: p. 491



SIZE SPECIFICATION (CM)

	10	12	14	16	18	20
Pcs./	16	16	16	16	16	16
EU	S	M	L	XL	2XL	3XL
Body Length (A)	64.50	67	67	69.50	69.50	69.50
Chest Width (B)	48	51	53.50	56	59.75	62.25



COLORS:

French Blue/Navy Navy/Navy Seal Grey/Black Black/Black