

## RETRA628 ABLAZE MEN'S PRINTABLE SOFTSHELL


**REGATTA**  
 PROFESSIONAL

SOFTSHELL

WATER REPELLENT

### MAIN FEATURES

265 g/m<sup>2</sup>
**Fabric Information**

Warm backed woven Softshell

Printable Softshell fabric

Ideal for screen, transfer and vinyl printing

**Special Features**

Inner zip guard

2 zipped lower pockets

This product has no external logo branding

Made using recycled materials

**Suggested Decoration:**

Digital printing (DTF), Embroidery, Flex, Screen printing

**Country Of Origin:**

Bangladesh



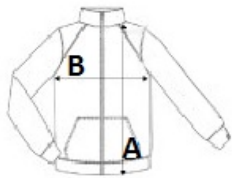
2025: p. 250

2024: p. 490



### SIZE SPECIFICATION (CM)

	XS	S	M	L	XL	2XL	3XL	4XL	5XL	6XL
Pcs./📦	16	16	16	16	16	16	16	16	16	16
Body Length (A)	0	68	70.50	73	73	75.50	75.50	0	0	
Chest Width (B)	0	51	55	59	63	68	72	0	0	
Sleeve Length (C)	0	66	67	68	69	70	71	0	0	



### COLORS:

Hot Pink/Black	Magma/Black	White/Light Steel	Black/Black	Black/Classic Red	Classic Red/Black
Dk Spruce/Black	Extreme Green/Black	French Blue/Navy	Navy/French Blue	Navy/Navy	New Royal/Black
Rock Grey/Black	Seal Grey/Black	Vibrant Purple/Black			