

**RETRA650** HYDROFORCE - 3-LAYER MEMBRANE HOODED SOFTSHELL
**REGATTA**  
 PROFESSIONAL

SOFTSHELL XPT

WATER REPELLENT

**MAIN FEATURES**300 g/m<sup>2</sup>**Fabric Information**

Warm backed woven Softshell XPT waterproof and breathable 3 layer membrane fabric

Textured ripstop shoulder panels

Wind resistant membrane fabric

Polyester mesh lining

ATL durable water repellent finish

**Special Features**

Inner zip guard

Foldaway wraparound lined hood with adjuster

Adjustable cuffs with rubber tabs

2 zipped lower and 1 chest pocket

Internal security pocket

Inner mobile phone pocket

Adjustable shockcord hem

Made using recycled materials

**Suggested Decoration:**

Heat transfer, Screen printing

**Country Of Origin:**

China

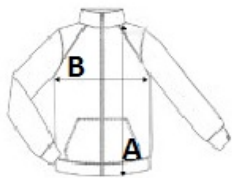


2025: p. 249

2024: p. 489

**SIZE SPECIFICATION (CM)**

	<b>S</b>	<b>M</b>	<b>L</b>	<b>XL</b>	<b>2XL</b>	<b>3XL</b>
<b>Pcs./</b>	16	16	16	16	16	16
<b>Body Length (A)</b>	68	70.50	73	73	75.50	75.50
<b>Chest Width (B)</b>	51	55	59	63	68	72
<b>Sleeve Length (C)</b>	78.75	80	81	82.50	84.50	86

**COLORS:**
 Oxford Blue/Black
  Seal Grey/Black
  Classic Red/Black
  Black/Black
  Navy/Black