

RETRA680 CLASSIC PRINTABLE LIGHTWEIGHT SOFTSHELL



REGATTA
PROFESSIONAL

SOFTSHELL

WATERREPELLENT

MAIN FEATURES

240 g/m²

Fabric Information

- Lightweight jersey backed Softshell fabric
- Softshell Stretch Light fabric technology
- Durable water repellent finish
- Wind resistant
- Super soft handle
- Quick drying
- Lightweight and easy to wear

Special Features

- 2 zipped lower pockets
- Made using recycled materials

Suggested Decoration:

Heat transfer, Screen printing

Country Of Origin:

China



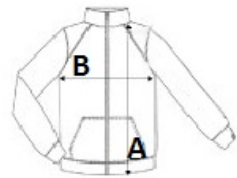
2025: p. 248

2024: p. 494



SIZE SPECIFICATION (CM)

| | S | M | L | XL | 2XL | 3XL |
|-------------------|-------|-------|-------|-------|-------|-------|
| Pcs./📦 | 16 | 16 | 16 | 16 | 16 | 16 |
| Body Length (A) | 66 | 68.50 | 71 | 71 | 73.50 | 73.50 |
| Chest Width (B) | 50.50 | 54.50 | 58.50 | 62.50 | 67.50 | 71.50 |
| Sleeve Length (C) | 64 | 65 | 66 | 67 | 68 | 69 |



COLORS:

- Oxford Blue/Oxford Blue
- Seal Grey/Seal Grey
- Black/Black
- Navy/Navy