

RETRA689 WOMEN'S OCTAGON II PRINTABLE 3 LAYER MEMBRANE SOFTSHELL


REGATTA
 PROFESSIONAL

SOFTSHELL XPT

WATER REPELLENT

MAIN FEATURES

300 g/m²
Fabric Information

Warm backed woven Softshell XPT waterproof and breathable

3 layer membrane fabric

Wind resistant membrane fabric

AtI durable water repellent finish

Special Features

Inner zip guard

2 zipped lower and 1 chest pocket

Adjustable shockcord hem

Shaped fit (women's only)

Made using recycled materials

Suggested Decoration:

Heat transfer, Screen printing

Country Of Origin:

China



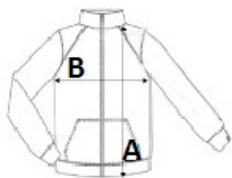
2025: p. 251

2024: p. 492



SIZE SPECIFICATION (CM)

| | XS | S | M | L | XL | 2XL | 3XL | 4XL |
|--------------------------|----|-------|----|-------|-------|-------|-------|-------|
| Pcs./ | 16 | 16 | 16 | 16 | 16 | 16 | 16 | 16 |
| Body Length (A) | 63 | 65 | 65 | 67.50 | 67.50 | 70 | 70 | 72 |
| Chest Width (B) | 47 | 49 | 51 | 53.50 | 56 | 59.75 | 62.25 | 65 |
| Sleeve Length (C) | 61 | 61.50 | 62 | 62.50 | 63 | 63.50 | 64 | 64.50 |



COLORS:

| | | | | | |
|---------------------|-------------------|-----------------------|-------------------|-------------|-------------------|
| Extreme Green/Black | Hot Pink/Black | Majestic Purple/Black | White/Light Steel | Black/Black | Classic Red/Black |
| Navy/Seal Grey | Oxford Blue/Black | Seal Grey/Black | | | |