

RETRA699 NORTHWAY PREMIUM SOFTSHELL

Outlet



REGATTA
PROFESSIONAL

SOFTSHELL

WATERREPELLENT

MAIN FEATURES

350 g/m²

Fabric Information

94% Polyester 6% Elastane

High pile backed Softshell

Durable water repellent finish

Quick drying

Wind resistant

Special Features

Inner zip guard

2 zipped lower and 1 zipped chest pocket

Suggested Decoration:

Embroidery, Heat transfer, Screen printing

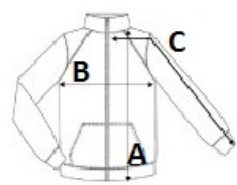
Country Of Origin:

China



SIZE SPECIFICATION (CM)

| | S | M | L | XL | 2XL | 3XL |
|-------------------|------|------|------|----|------|------|
| Pcs./📦 | 12 | 12 | 12 | 12 | 12 | 12 |
| Body Length (A) | 71 | 73,5 | 76 | 76 | 78,5 | 78,5 |
| Chest Width (B) | 51 | 55 | 59 | 63 | 68 | 72 |
| Sleeve Length (C) | 79,5 | 81 | 82,5 | 84 | 85,5 | 87 |



COLORS:

Black Iron