

RETRA707 TACTICAL SURRENDER SOFTSHELL **Outlet**



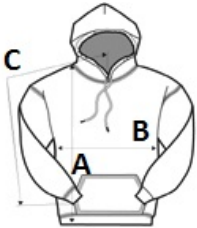
MAIN FEATURES

- 260 g/m<sup>2</sup>
- Fabric Information**
- Warm backed woven stretch Softshell fabric - 96% polyester/ 4% elastane
- Durable water repellent finish
- Special Features**
- Wind resistant
- Grown on hood with adjusters
- Adjustable hem
- Adjustable cuffs
- Stretch binding to cuffs and hem
- Made using recycled materials
- Country Of Origin:**
- Myanmar



SIZE SPECIFICATION (CM)

	S	M	L	XL	2XL	3XL
Pcs./📦	16	16	16	16	16	16
Body Length (A)	70,5	73	75,5	75,5	78	78
Chest Width (B)	51	55	59	63	68	72
Sleeve Length (C)	79,5	81	82,5	84	85,5	87



COLORS:

-  Dark Khaki/Black
-  Iron/Black