

RETRF603 THORNL Y MEN - FULL ZIP MARL FLEECE



SYMMETRY

MAIN FEATURES

220 g/m²

Fabric Information

- 100% polyester marl knit effect fleece
- 220gsm 1 side anti-pill Symmetry fleece
- Super soft handle
- Quick drying

Special Features

- Chin guard
- 2 zipped lower pockets
- Self fabric cuffs
- This product has no external logo branding
- Made using recycled materials

Country Of Origin:

Bangladesh

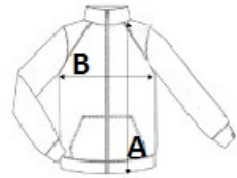


2024: p. 489



SIZE SPECIFICATION (CM)

	S	M	L	XL	2XL	3XL
Pcs./	16	16	16	16	16	16
Body Length (A)	65	66	67	68	69	70
Chest Width (B)	52	56	60	64	69	73
Sleeve Length (C)	66	68.50	71	71	73.50	73.50



COLORS:

- Dark Khaki Marl
- Seal Grey Marl
- Navy Marl