

RETRF621 WOMEN'S X-PRO COLDSRING II HYBRID PERFORMANCE STRETCH HOODED FLEECE JACKET

Outlet
REGATTA
PROFESSIONAL


EXTOL STRETCH



MAIN FEATURES

210-235 g/m²

Fabric Information

100% polyester marl knit effect fleece

Special Features

Extol stretch side, hood and underarm panels

RFID pocket protection

Stretch binding to hood opening, cuffs and hem

Stretch binding thumb loops

Zipped chest pocket

2 zipped lower pockets

Inner zip guard

Reflective details for enhanced visibility

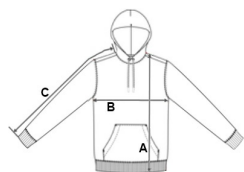
Country Of Origin:

China



SIZE SPECIFICATION (CM)

	S	M	L	XL	2XL	3XL
Pcs./	16	16	16	16	16	16
Body Length (A)	64	64	66,5	66,5	69	69
Chest Width (B)	48	50	52,5	55	58,5	61
Sleeve Length (C)	74,3	75	75,7	76,4	77,1	77,8



COLORS:

Grey Marl/Black
 Oxford Blue
 Marl/Navy