

**RETRW461** ARDMORE - WATERPROOF SHELL JACKET**REGATTA**  
PROFESSIONAL

HYDRAFORT 5000

**MAIN FEATURES**200 g/m<sup>2</sup>**Fabric Information**

Waterproof Hydrafort 5000 coated peached polyester

Polyester mesh lined

Windproof fabric

Taped seams

**Special Features**

Concealed hood with adjuster

2 lower zipped pockets

1 internal pocket with earphone cord access

Adjustable cuffs

Adjustable shockcord hem

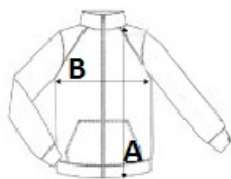
Internal zipped embroidery access

**Country Of Origin:**

China

**SIZE SPECIFICATION (CM)**

	<b>XS</b>	<b>S</b>	<b>M</b>	<b>L</b>	<b>XL</b>	<b>2XL</b>	<b>3XL</b>
<b>Pcs./</b>	16	16	16	16	16	16	16
<b>Body Length (A)</b>	0	76.50	76.50	79	79	81.50	81.50
<b>Chest Width (B)</b>	0	53.50	57.50	61.50	65.50	70.50	74.50
<b>Sleeve Length (C)</b>	0	67	68	69	70	71	72

**COLORS:**

Black/Classic Red
  Bottle Green/Seal Grey
  Majestic Purple/Seal Grey
  Navy
  Navy/Classic Red
  Seal Grey/Black