

## SD040 JACK DENIM SHIRT



## MAIN FEATURES

155 g/m<sup>2</sup>  
 100% Cotton  
 Relaxed fit  
 No pockets for maximum embellishment area.  
 Narrow collar  
 Back yoke  
 Satin weave  
 Button placket centre front fastening  
 Turned hem with single needle stitch detail  
 Single needle contrast at armholes collar and front placket  
 2 button placket at cuff

## Country Of Origin:

Bangladesh



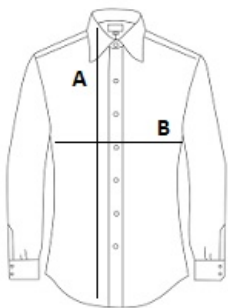
2025: p. 122

2024: p. 326



## SIZE SPECIFICATION (CM)

	S	M	L	XL	2XL
Pcs./📦	24	24	24	24	24
Body Length (A)	66	69	71	73	75
Chest Width (B)	52	56	60	64	68
Sleeve Length (C)	66	67	68	70	72



## COLORS:

Black
  Dark Blue
  Light Blue