

## SD045 LUCY DENIM SHIRT

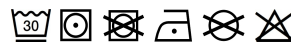


## MAIN FEATURES

155 g/m<sup>2</sup>  
 100% Cotton  
 Standard fit  
 No pockets for maximum embellishment area.  
 Modern narrow collar  
 Yoke at back shoulder  
 Satin weave  
 Button placket centre front fastening  
 Turned hem with single needle stitch detail  
 Single needle contrast at armholes collar and front placket  
 2 button placket at cuff

## Country Of Origin:

Bangladesh



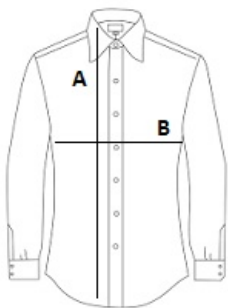
2025: p. 122

2024: p. 326



## SIZE SPECIFICATION (CM)

	XS	S	M	L	XL
Pcs./📦	24	24	24	24	24
Body Length (A)	68	70.50	73	75.50	78
Chest Width (B)	45	49	53	57	61
Sleeve Length (C)	62	63	64	65	66



## COLORS:

Black
  Dark Blue
  Light Blue