

SO02991 SOL'S SPENCER - HOODED SWEATSHIRT



MAIN FEATURES

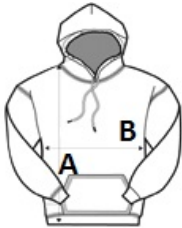
- 280 g/m²
- Quality**
 - 80% Ringspun cotton - 20% polyester
 - Brushed lining
 - Outside: 100% cotton
- Style**
 - Front pouch pocket
 - Cut and sewn
 - Lined hood with drawcord
 - 2x2 ribbed cuffs and hem
 - Half moon inside collar
 - Taped neck
- Suggested Decoration:**
 - Embroidery
- Country Of Origin:**
 - Bangladesh

📄 2025: p. 184
📄 2024: p. 403



SIZE SPECIFICATION (CM)

	S	M	L	XL	2XL
Pcs./📦	25	25	25	25	25
Body Length (A)	68	69	70	71	72
Chest Width (B)	51	54	57	60	63



COLORS:

- ☒ Black
- ☐ Grey Melange
- ☐ White