

SO16020 SOL'S EMBASSY - LONG SLEEVE OXFORD WOMEN'S SHIRT



MAIN FEATURES

- 135 g/m²
- Quality**
- 70% cotton - 30% polyester
- Style**
- Fitted cut
- Long sleeves
- Classic collar
- Adjustable rounded cuffs
- 7 tone-on-tone button placket
- Chest darts
- Suggested Decoration:**
- Digital printing (DTF), Embroidery, Flex, Heat transfer, Screen printing
- Country Of Origin:**
- Bangladesh



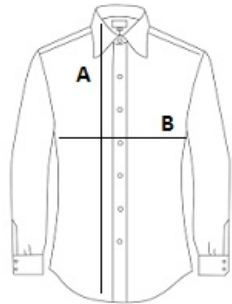
2025: p. 131

2024: p. 333



SIZE SPECIFICATION (CM)

	XS	S	M	L	XL	2XL
Pcs./📦	20	20	20	20	20	20
Body Length (A)	64	65	66	67	68	69
Chest Width (B)	45	48	51	54	57	60



COLORS:

- ☒ Silver ☒ Sky Blue ☐ White