

SO46800 SOL'S ROXY - WOMEN'S SOFTSHELL ZIPPED JACKET



MAIN FEATURES

- 340 g/m<sup>2</sup>
- Quality**
- 94% polyester, 6% elastane
  - 100% polyester polar fleece lining
  - 3 layers
  - 8000 mm waterproof breathable membrane
- Style**
- 2 zipped side pockets
  - 1 zipped chest pocket
  - Waist adjustable drawstring
  - Adjustable cuffs with self-gripping fastener
- Suggested Decoration:**
- Embroidery, Flex, Heat transfer, Screen printing
- Country Of Origin:**
- China, Bangladesh



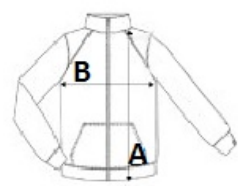
2025: p. 273

2024: p. 509



SIZE SPECIFICATION (CM)

	S	M	L	XL	2XL
Pcs./	10	10	10	10	10
Body Length (A)	63	65	67	69	71
Chest Width (B)	46	49	52	55	58



COLORS:

- Army
- Bottle Green
- Charcoal Grey
- Dark Chocolate
- Green Absinthe
- Grey Melange
- Pepper Red
- Royal Blue
- Abyss Blue
- Black
- White