

WK4001 SET-IN SLEEVE SWEATSHIRT (ex.KA4001)



MAIN FEATURES

- 300 g/m²
- EX KA4001**
- 80% cotton/20% polyester
- 3-thread fleece with LSF (Low Shrinkage Fleece) treatment
- Washable at 60°C
- Ribbed crew neck and cuffs
- Invisible zipped pocket on right-hand side
- Backing at shoulders and elbows for added resistance
- Pen holder on left sleeve
- Half-moon finish at back
- Hanging loop at neck
- Twin needle finishing at hem
- Longer back for added comfort
- Certified STANDARD 100 by OEKO-TEX® N° CQ 1007/7, IFTH

Suggested Decoration:

Embroidery

Country Of Origin:

Bangladesh



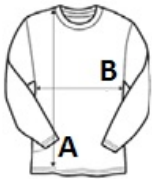
2025: p. 224

2024: p. 452



SIZE SPECIFICATION (CM)

	XS	S	M	L	XL	2XL	3XL	4XL	5XL
Pcs./📦	15	15	15	15	15	15	15	15	15
Body Length (A)	68	70	72	74	76	78	80	82	84
Chest Width (B)	50	53	56	59	62	65	68	71	74
Sleeve Length (C)	63	64	65	66	67	68	69	70	71



COLORS:

- Black
- Dark Grey
- Navy