

**WK450 UNISEX 3-LAYER TWO-TONE BIONIC SOFTSHELL JACKET****MAIN FEATURES**

300 g/m<sup>2</sup>  
 96% polyester/4% elastane  
 3-layer bonded fabric breathable 3,000 g/m<sup>2</sup>/24 h and waterproof 5,000 mm  
 Outer: 96% polyester/4% elastane  
 Breathable and waterproof membrane mid layer  
 Inner layer: microfleece  
 BIONIC FINISH ® ECO treatment (fluorine-free waterproofing for optimal performance)  
 Plastic zip fastening with matching zip puller  
 2 zipped pockets with front zip puller  
 3-part hood adjustable using stoppers inserted in the seam  
 Contrasting inner taped neckline with hanging loop  
 Elasticated pen holder with 3 compartments on the left sleeve  
 Contrasting piping between the two-tone parts of the garment (body and sleeves, front and back)  
 2x2 ribbed cuffs and hem lined with elastane  
 Tear-away brand label

**Country Of Origin:**

Bangladesh

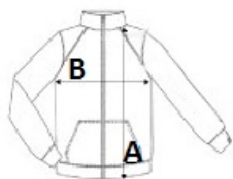


2025: p. 267

2024: p. 524

**SIZE SPECIFICATION (CM)**

	S	M	L	XL	2XL	3XL	4XL	5XL
<b>Pcs./</b>	10	10	10	10	10	10	10	10
<b>Body Length (A)</b>	71	73	75	77	79	81	83	85
<b>Chest Width (B)</b>	52	55	58	61	64	67	70	73
<b>Sleeve Length (C)</b>	67.50	68.50	69.50	70.50	71.50	72.50	73.50	74.50

**COLORS:**

Black	Black/Dark Grey	Black/Forest Green	Black/Orange	Black/Red	Black/Yellow
Navy	Navy/Dark Grey	Navy/Royal Blue			