

WK9105 FLEECE JACKET WITH REMOVABLE SLEEVES (ex.KA9105)**MAIN FEATURES**400 g/m²**EX KA9105**

100% polyester

Outer: 100% polyester - 400 gsm

Reinforced inserts in 100% polyester taslon with acrylic coating

Polyester 210T inner sleeve lining

2 in 1 fleece jacket

2 zippered front pockets and 1 chest pocket with flap and tear release fastening

Tone on tone large yokes on shoulders and lower arms

Easy decoration access at front and back

Polyester lined removable sleeves for added comfort

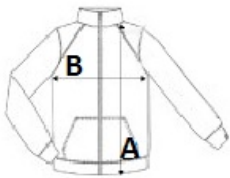
Elasticated cuffs and hem

Country Of Origin:

China, Bangladesh

📅 2025: **p. 267**📅 2024: **p. 523****SIZE SPECIFICATION (CM)**

	S	M	L	XL	2XL	3XL	4XL
Pcs./📦	10	10	10	10	10	10	10
Body Length (A)	70.25	72.50	74.75	77	79.25	82	84.25
Chest Width (B)	53	056	59	62	65	69	72
Sleeve Length (C)	67.50	69.50	71.50	73.50	75.50	77.75	79.75

**COLORS:**

	Black		Convoy Grey		Dark Grey		Forest Green		Navy		Red
	Royal Blue										