

RETRA158 HI-VIS PRO TWO TONE 3-IN-1 JACKET **Outlet**
REGATTA
 PROFESSIONAL


SYMMETRY

CARACTERISTICI PRINCIPALE200 g/m²**Fabric Information**

Water Vapour Resistance Rating (Ret<20) Class 3

Waterproof and breathable Isotex 10000 100% polyester fabric

Conforms to EN343:2003 A1:2007 Class 3:3

Heavy duty 300D Oxford polyester

Windproof fabric

Polyester taffeta lining

Taped seams

Special Features

EN ISO 20471:2013 +A1:2016 Class 2

Interactive design

2 zipped lower and 1 zipped chest pocket

Internal security pocket

Adjustable cuffs

Concealed hood with adjusters

Storm flap with hook and loop fastening

Inner zip & chin guard

Concealed zip entrance in lining for embroidery access

Orange colour-way also conforms to RIS-3279/TOM

ID Reflection - Our angled chevrons allow people to know which way you are facing towards or away from

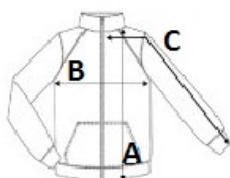
This product has no external logo branding

Tara de origine:

China

**SPECIFICAȚIE DIMENSIUNE (CM)**

| | S | M | L | XL | 2XL | 3XL |
|------------------------------|----------|----------|----------|-----------|------------|------------|
| Buc./ | 8 | 8 | 8 | 8 | 8 | 8 |
| Lungimea corpului (A) | 76,5 | 76,5 | 79 | 79 | 81,5 | 81,5 |
| Latimea pieptului (B) | 54 | 58 | 62 | 66 | 71 | 75 |
| Lungimea manecii (C) | 67 | 68 | 69 | 70 | 71 | 72 |

**CULORI:**

Yellow/Navy