

AWJH036 WOMEN'S FASHION SWEAT **Outlet**

**JustHoods**  
ALWAYS

**POPIS**280 g/m<sup>2</sup>

80% Cotton/20% Polyester

Twin needle stitching detail

Scooped rib crew neck

Girlie fit

Drop shoulder

Ribbed cuffs and hem

Brushed inner fleece

Simple tear out label makes it perfect for rebranding

Soft cotton faced fabric creates ideal printing surface

Worldwide Responsible Accredited Production (WRAP) certified production

**Suggested Decoration:**

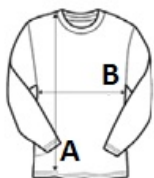
DTG, Embroidery, Heat transfer, Screen printing

**Krajina pôvodu:**

Pakistan

**ROZMERY (CM)**

	<b>XS</b>	<b>S</b>	<b>M</b>	<b>L</b>	<b>XL</b>
<b>Ks.</b>	24	24	24	24	24
<b>Dĺžka (A)</b>	61	64	67	70	73
<b>Šírka cez prsia (B)</b>	42	45	48	51	54
<b>Dĺžka rukáva (meraná od stredu chrbta) (C)</b>	53	53	53	53	53

**FARBY:**

Charcoal